

The BuzzBox[™]

User Manual

Revised December 2006

www.buzztools.com
Buzz Tools, Inc.
Ste 4 PBM 410
2415 San Ramon Valley Blvd
San Ramon, CA 94583

To rename files:

1. Exit out of the BuzzBox software.
2. From “My Computer” go to your hard drive and browse to your Designs folder.
3. Select desired design, right click on it with the computer mouse and select **Rename**.
4. At the prompt change the file name.

Troubleshooting

Card Reader / Writer Box is not found by Software:

- Power is supplied to the Card Reader / Writer box via the USB connection. If the box is connected to a USB hub, be sure that the hub has its own power source or the box may not have enough power to operate correctly. Re-plug the USB cables making sure they are firmly attached then try again.

If during Read/Write procedure System Error message appears:

- Close the Card Reader/ Writer software and restart the Reader / Writer box by re-plugging the USB cables making sure they are firmly attached then try again. If the problem persists, contact your dealer or the manufacturer.

Technical Support

Technical Support is provided on the Buzz Tools website. Please visit www.buzztools.com/answers or write to us at Buzz Tools, Inc., Ste4 PMB 410, 2415 San Ramon Valley Blvd, San Ramon, CA 94583

Content:

- Introduction
- Package Contents
- Minimum System Requirements
- Hardware Installation
- Software Installation
- Software Configuration
- Screen features and menu options.
- Writing to Embroidery Cards
- Reading Embroidery Cards
- Troubleshooting

Introduction

The BuzzBox allows you to write to a blank embroidery card as many designs as the card can hold. The best results are achieved by using *The BuzzBox™* with *The BuzzCard™* that holds about 500,000 stitches total. You can write designs in Brother, Baby Lock, Bernina Deco and Simplicity formats (.PES, .PEC) or, in Viking/Husqvarna format (.HUS).

You can save designs to your computer by downloading them from the Internet, CD's, floppy disks, etc. Using the browsing software supplied, you will browse to the Designs folder, select desired patterns and transfer them to the card.

Write Card Error

If you have chosen more design files than will fit on the card, a warning message will appear. You will need to remove some designs from the holding area before you can write to the card.



1. Click OK.
2. Select a design in the **Holding Area** and click the **Remove** action button. If you forget to select a design or designs, the entire holding area will be cleared.
3. Try to write again.

Package Contents

- Embroidery Card Reader / Writer Box
- Re-writable Embroidery Card
- USB Cable
- Manual
- Installation CD
- Warranty Registration Card

Minimum System Requirements

- IBM PC Compatible*
- Pentium 166 MHz
- 32 Mb Memory
- 4 Mb Available Hard Drive Space
- USB Port
- MS Windows 95/98/ME/2000/XP
- Screen Resolution 800x600
- CD ROM Drive

* MAC users must have “Virtual PC” installed to work with *The BuzzBox*

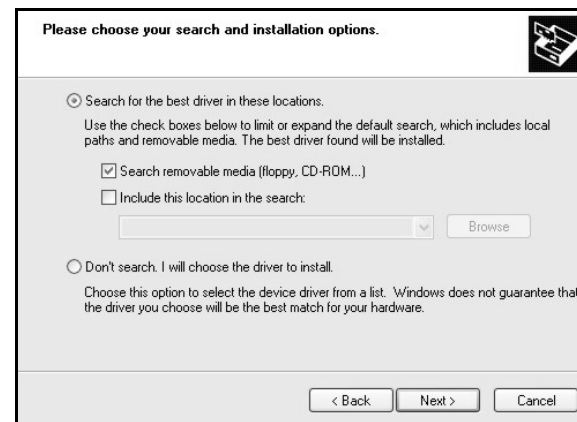
Free Software Updates

The **Help > Check for Update** command automatically checks the Buzz Tools web site for a BuzzBox™ program update and optionally applies it. We recommend you check for an update monthly in order to be sure you have applied the most current bug fixes and enhancements to the program.

The bottom section of the screen is a **Holding Area** for designs writing, reading and view designs on the embroidery card. Directly above the Holding Area is **the Action Bar** which includes the following options:

- **Copy to Holding Area** – copies the currently selected design(s) to the holding area.
- **Remove from Holding Area** – removes designs from the holding area. If no designs are selected in the holding area, all designs are removed.
- **Write to Card** - starts writing a card (For more details see Writing Embroidery Cards).
- **Read from Card** - starts reading from a card (For more details see Reading Embroidery Cards).
- **Rename** – renames a design in the holding area.
- **Copy to Folder** – copies the designs from the holding area to the currently selected folder on your computer

6. Make sure that “Search for the best driver for your device (Recommended)” is selected and then “Search removable media” option is checked. Click NEXT.



Allow Windows to search your CD for the best hardware driver.

7. The next step depends on the version of Windows you are running. If Card Reader / Writer appears, click NEXT. If you receive the message “No digital signature”, accept the driver choice anyway.
8. The final dialog of the Add Hardware wizard displays. Click FINISH. You do not need to restart your computer even if directed to do so by the Windows operating system.

Important! Power is supplied to the Card Reader/ Writer box via the USB connection. If the box is connected to a USB hub, be sure that the hub has its own power source or the box may not have enough power to operate correctly.